



**Flat 39, Edison Building 20 Westferry Road, London, E14  
8LU**



A beautifully presented contemporary apartment set along the prestigious Thames Path, offering stylish riverside living in the heart of Canary Wharf. The property features expansive floor-to-ceiling windows, a Juliette balcony and refined neutral interiors, creating a bright and elegant living space throughout.

Set within the exclusive gated Millennium Harbour development, residents enjoy a secure and well-maintained environment with landscaped communal gardens, 24-hour concierge service and a private residents' gymnasium. The development is renowned for its peaceful setting and high-quality upkeep, while remaining moments from the vibrant commercial and social hub of Canary Wharf.

Ideally located just a short walk from Bank Street, the apartment benefits from immediate access to an exceptional selection of restaurants, cafés, bars and everyday conveniences, alongside superb transport connections via Canary Wharf Underground and DLR, offering swift access into the City and beyond.

Council Tax Band: D (Tower Hamlets Council)

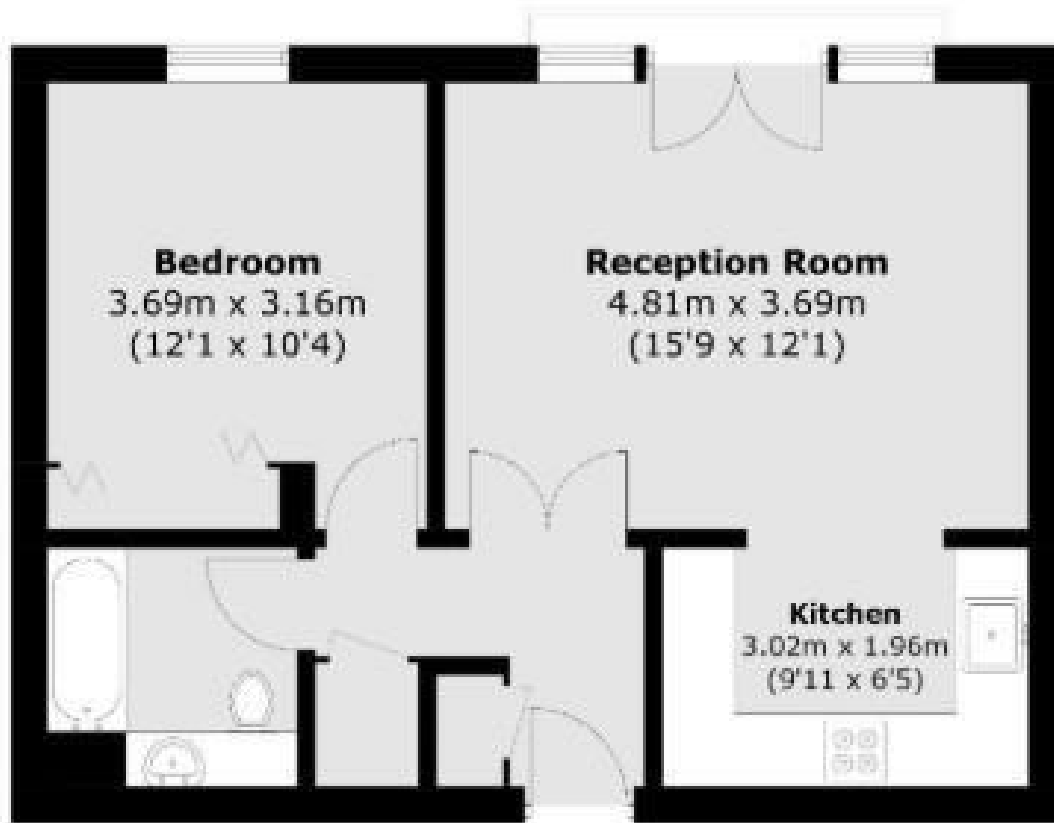
Change of contract fee: £50 including vat

Electricity supply – Mains | Heating, Hot Water – Electric | Water Supply & Sewerage – Mains | Lift Access


To check broadband and mobile phone coverage please visit Ofcom







Total area (approx.): 47.4 sq. m (510.2 sq. ft)

Energy Efficiency Rating		Current	Potential
<i>Very energy efficient - lower running costs</i>			
(92 plus)	A		
(81-91)	B		
(69-80)	C		
(55-68)	D	66	72
(39-54)	E		
(21-38)	F		
(1-20)	G		
<i>Not energy efficient - higher running costs</i>			
<b>England &amp; Wales</b>		EU Directive 2002/91/EC 	

These particulars, whilst believed to be accurate are set out as a general outline only for guidance and do not constitute any part of an offer or contract. Intending purchasers should not rely on them as statements of representation of fact, but must satisfy themselves by inspection or otherwise as to their accuracy. No person in this firm's employment has the authority to make or give any representation or warranty in respect of the property.